

Application Note 4

$I\mu S$ for High Resolution Small Molecule Crystallography

Introduction

The concept of using a microfocus X-ray source in combination with multilayer X-ray mirrors for Cu-K α radiation was first pioneered for protein crystallography by U. Arndt in the early 90's. In contrast to multilayer mirrors for Cu sources, the maximum angles of incidence at which a multilayer mirror reflects higher energy radiation, such as Mo-K α or Ag-K α radiation, are significantly smaller. With today's deposition technology, however, high quality multilayer mirrors can be produced that have a small d-spacing and reflect higher energy radiation at larger angles of incidence. These mirrors ensure high flux and make way for new high-brilliance low-power X-ray sources for shorter wavelengths. Here, we will be comparing the performance of the Incoatec Microfocus Source $I\mu S$ for Mo-K α radiation with a fine focus sealed tube system and with a traditional rotating anode.

Experimental Set-up

To compare the $I\mu S$ with a 2 kW Mo sealed tube system (graphite monochromator, 0.5 mm monocapillary), the $I\mu S$ was attached to a Bruker Smart Apex II goniometer as a second source. The $I\mu S$ was

constantly operated at 30 W (50 kV, 0.60 mA) for a period of 16 months. The flux was monitored repeatedly and no significant decrease was detected ($\sim 0.3\%$ per month).

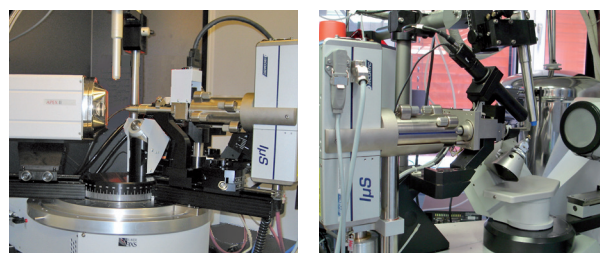


Figure 1: The Incoatec Microfocus Source $I\mu S$ in combination with a Bruker Smart Apex II (left) and a Nonius Kappa CCD diffractometer (right).

Furthermore, several crystals of organic and inorganic compounds were measured with the $I\mu S$ attached to a Nonius Kappa CCD diffractometer. Reference data sets of the same crystals were recorded with a FR591 Mo rotating anode (graphite monochromator, 0.3 mm collimator). The rotating anode generator was operated at 4 kW (50 kV, 80 mA).

Beam Characteristics of the μ S

The Mo- μ S delivers a focused and monochromatic X-ray beam with a FWHM of 0.12 mm in the image focus and a flux density of about 1×10^9 counts/(s mm²) calculated over the central beam area. In contrast to the typical intensity plateau that is produced by sources with a graphite monochromator, the beam profile from the μ S has a symmetrical Gaussian-shaped intensity distribution with high peak intensity. The flux density of the μ S is about four times higher than the flux density of the 2 kW Mo sealed tube system and comparable to that of the 4 kW rotating anode generator. The beam divergence of the μ S is 5 mrad, whereas the two systems with graphite monochromator have a beam divergence of about 8 mrad.

μ S compared to a 2kW Mo sealed tube

Comparative measurements have been performed on two crystals of the organic compound C₂₄H₂₁N₃O₃ (Fig. 2) under identical conditions. The total gain in intensity achieved with the μ S was more than a factor of 7 for a small crystal and about a factor of 4 for a larger crystal. The signal-to-noise-ratio after scaling is in both cases clearly in favour for the μ S. Table 1 summarizes details of the comparative measurements on C₂₄H₂₁N₃O₃ (T. Schulz et al. *J. Appl. Cryst.* (2009) 42, 885 – 891).

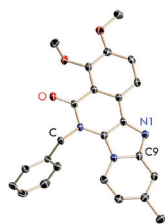


Figure 2: Picture of the molecule C₂₄H₂₁N₃O₃ (P2₁, T = 100 K, H- atoms are omitted for clarity).

Source	μ S	Sealed Tube	μ S	Sealed Tube
Size [mm ³]	0.10 x 0.05 x 0.05		0.30 x 0.25 x 0.15	
Power [kW]	0.03	2.0	0.03	2.0
Exposure time [s/°]	100	300	33	50
$\langle I \rangle^\#$	139	19	4763	1286
$\langle I/\sigma \rangle$	15.3; 3.5*	10.7; 2.1*	37.6; 21.1*	30.4; 13.6*
R _{int}	0.039	0.062	0.021	0.023
R _{σ}	0.053	0.090	0.019	0.022
R1	0.039	0.056	0.030	0.031
wR2	0.092	0.105	0.082	0.082
N1-C9 distance [Å]	1.325 (3)	1.325 (4)	1.323 (2)	1.324 (2)

Table 1: Details of four sets of data collected on C₂₄H₂₁N₃O₃ (# normalized to 1°/min; * values for highest resolution shell 0.85 - 0.75 Å).

μ S compared to a 4 kW rotating anode

Several data sets were measured on crystals of organic and inorganic compounds with the μ S and with a FR591, both attached to a Nonius Kappa CCD. Table 2 shows details for two representative crystals (quartz, ammonium-bitartrate). The data clearly demonstrate the superior performance of the μ S on very small crystals for which an increase in intensity by a factor of about 3 was observed. For larger crystals, the performance is comparable to a 4 kW rotating anode generator with graphite monochromator.

Source	μ S	RAG	μ S	RAG
Sample	SiO ₂		C ₄ H ₉ O ₆ N	
Size [mm ³]	0.02 x 0.04 x 0.04		d = 0.18 (sphere)	
Power [kW]	0.03	4.0	0.02	4.0
Exposure time [s/°]	150	150	20	20
$\langle I \rangle^\#$	17.1	5.9	344.1	537.9
$\langle \sigma \rangle$	1.6	1.1	5.1	6.8
R1	0.084	0.090	0.036	0.041
wR2	0.240	0.241	0.082	0.082

Table 2: Details for sets of data recorded on a smaller quartz crystal and a larger crystal of ammonium-bitartrate.

Conclusion

The μ S for Mo radiation yields excellent results for single crystal diffraction experiments. The focusing multilayer optics deliver maximum flux on the sample and improve the signal-to-noise ratio by minimizing the background. The μ S is ideal for routine and high resolution structure determinations and for special applications, such as high-pressure experiments. For very small crystals, the μ S showed an intensity gain of factor of 3 compared to the 4 kW rotating anode. The data quality from crystals with a diameter of about 0.1 mm was comparable to that from the FR591 rotating anode generator.

The air-cooled μ S has all the advantages of a sealed tube system and is geared up as an upgrade for all existing diffractometers, offering high performance together with low maintenance and low operating costs.

Acknowledgment: Incoatec GmbH would like to thank T. Schulz and Prof. D. Stalke (Uni. Göttingen), and A. Dreier and Prof. C. W. Lehmann (MPI, Mülheim) for kindly providing us the data.

Author: Dr. Jürgen Graf, Incoatec GmbH